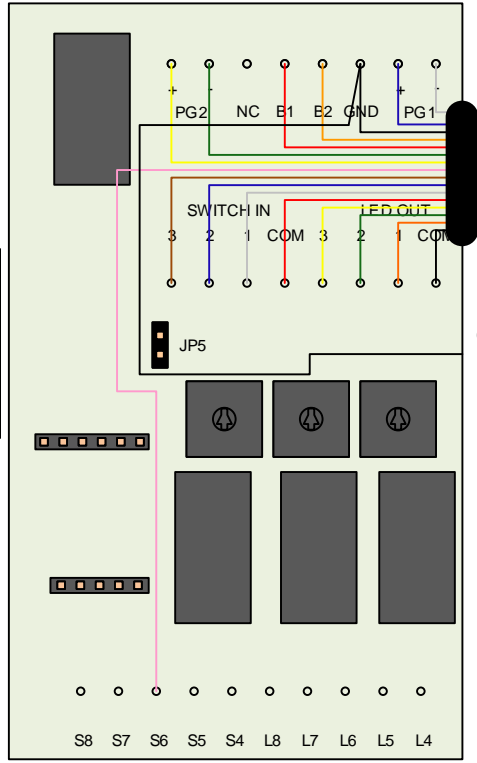


Note:
JP5: link to power both Contactors (PG1 & PG2) from either battery channel
Do NOT link where mixed battery voltages are sensed (e.g. 12/24V)



PCB Connections

Battery 1 Sense	Red
Battery 2 Sense	Orange
Ground	Black
PG 1 Relay +	Blue
PG 1 Relay -	White
PG 2 Relay +	Yellow
PG 2 Relay -	Green
Switch Com	Red
Switch In 1	White
Switch In 2	Blue
Switch In 3	Brown
Switch In 6	Pink
LED Com	Black
LED Out 1	Orange
LED Out 2	Green
LED Out 3	Yellow

0.75mm High Temperature Thinwall Automotive cabling in accordance with ISO67221-1 2011 (Class B) Plain Copper Conductors – PVC Insulated. Temp Rating -40 to +105°C

TITLE PowerGuard PRO Wiring Colours & Connections	DRAWN MH	DIMENSIONS IN	ISSUE 02	DATE 04/15	AUTH MH	MODIFICATION DESCRIPTION Casing Earth Cable Added
	DATE 22/02/2012		SCALE	A	26/03/18	MH
CLIENT Merlin Equipment	CHECKED	NOTES				

Merlin Equipment Ltd,
Unit 4, Cabot Business
Village, Holyrood Close,
Cabot Lane, Poole, Dorset
BH17 7BX

Tel: 01202 - 697979 Fax: 01202 - 691919
www.merlinequipment.com

© 2011 Merlin Equipment Limited. This drawing remains the sole right and property of Merlin Equipment Limited. You may not make unauthorised copies or pass this information to third parties without the express written permission of Merlin Equipment Limited.

MERLIN
The Power People

DRAWING No.
598